

China equities checklist: 8 reasons to stay invested

June 2022

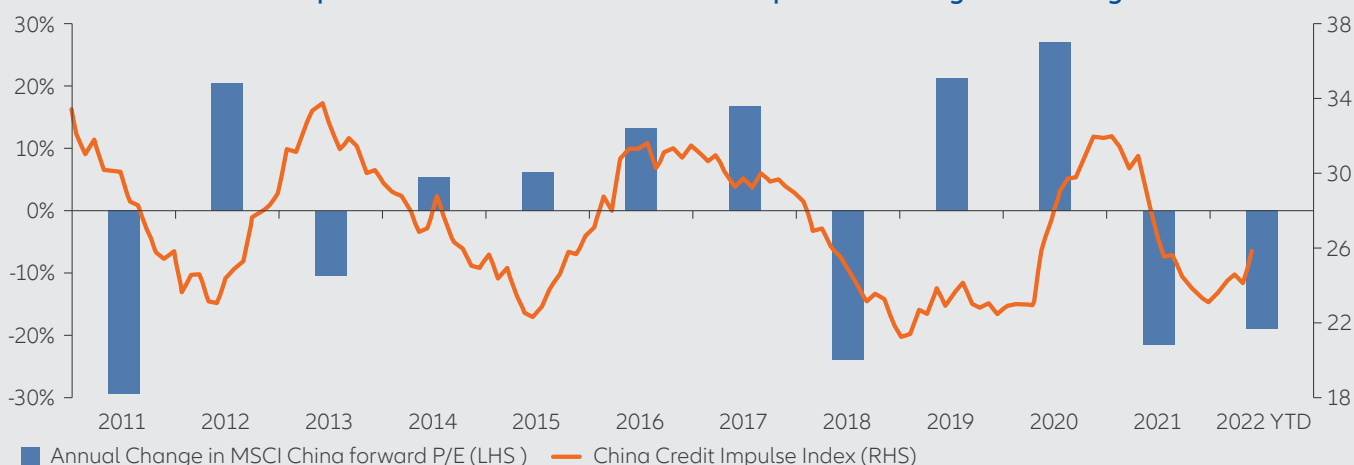
China's zero-Covid approach and regulatory challenges have unsettled markets, but we don't think they alter the long-term investment case. Renewed government policy support and a commitment to a high-tech, carbon-free economic future should encourage long-term investors to take a fresh look at China.

1 Equities set to potentially benefit from pro-growth policies and a more stable backdrop

Many investors have been nervously watching the volatility in Chinese equity markets, and their worries are understandable. But these ups and downs seem to be because of a few macroeconomic and geopolitical issues that appear unlikely to derail the long-term investment case for China. The economy may have slowed since mid-2021, but recently there has been a clear pivot to policy aimed at supporting economic growth. We expect that support to gain traction in

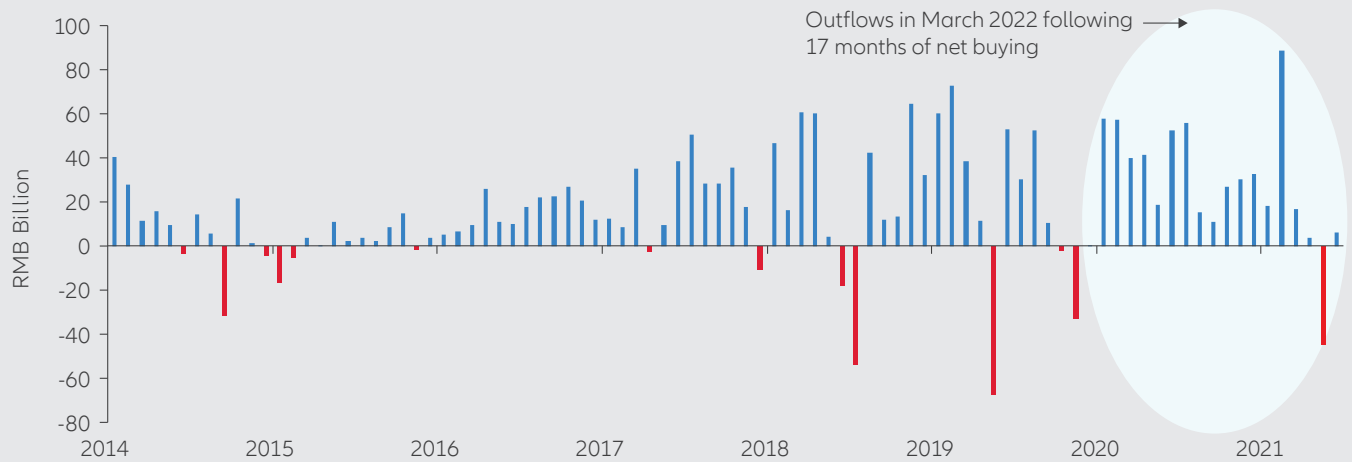
the coming months. China equities typically track domestic liquidity closely, with potentially improved stock market performance following periods of increased access to credit. With the China Credit Impulse Index, which measures the credit cycle in the market, already picking up in 2022, we anticipate more stable market conditions as the economy is lifted by greater government spending and the outlook for corporate earnings improves. At the same time, an expected easing of some of the more restrictive Covid-19 measures should allow the benefits of policy easing to come through.

Exhibit 1: China Credit Impulse Index and MSCI China forward price to earnings ratio change



Source: Allianz Global Investors, Bloomberg. Data as at 31 March 2022. Investors cannot invest directly in an index.

Exhibit 2: monthly northbound net buying via Stock Connect since 2014 (in RMB bn)



Source: Wind, Allianz Global Investors. Data as at 30 April 2022.

2 Long-term trend of foreign investors buying China equities intact

Despite the negative news out of China, global investors have continued to add China A-shares (stocks of Chinese companies listed on exchanges in Shanghai or Shenzhen) to their portfolios. March 2022 marked the first instance of net selling in 17 consecutive months. The Chinese government helped lay the groundwork for greater cross-border investment with the launch of the Shanghai and Shenzhen Stock Connect schemes in 2014 and 2016, respectively:

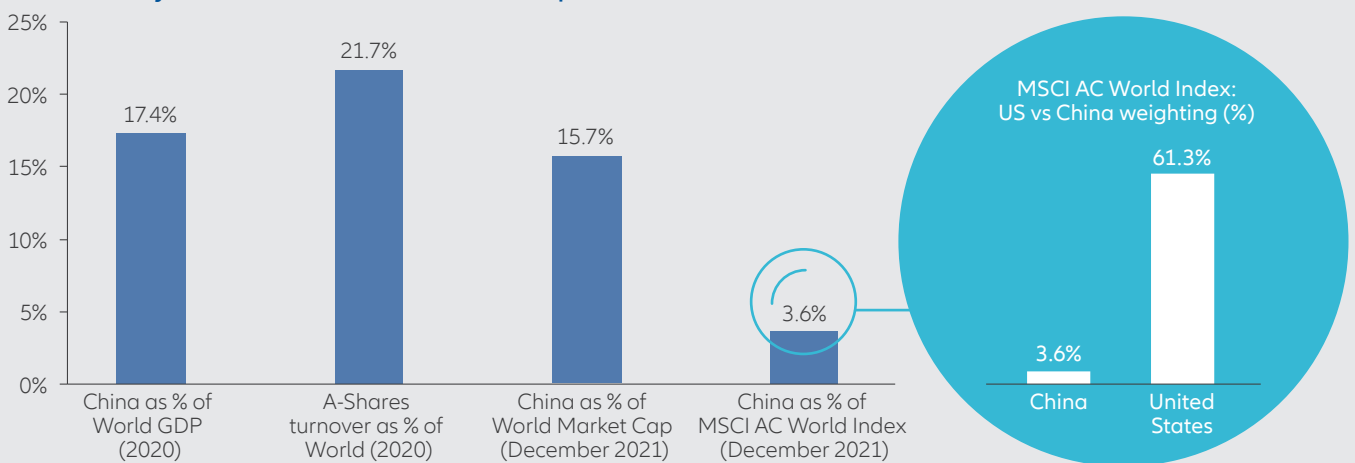
- In “southbound” trades, mainland China residents use the Shanghai or Shenzhen exchanges to buy Hong Kong-listed stocks.
- Investors outside of mainland China can use the Hong Kong exchange to buy A-shares in Shanghai or Shenzhen (known as a “northbound” trade).

China is expected to stay committed to further opening its markets to foreign investment in the coming years.

3 China’s potential is not captured in world equity indices

Despite China’s growth and ambitions, we believe its significant economic potential is not fully reflected in global equity indices. Indeed, a key reason for the long-term trend of global investors adding to China A-shares is because of the relative mismatch between the historically low level of portfolio allocations and China’s economic clout and market scale. As at 31 December 2021, the MSCI AC World Index had a 61.3% allocation to the United States and just a 3.6% allocation to China. As China’s capital markets become increasingly integrated into the global financial system, we believe this gap should narrow. And over time we expect global investor allocations to China should continue to increase, in line with China’s growing economic influence.

Exhibit 3: key statistics on China and China equities



Source: FactSet, MSCI, Goldman Sachs Global Investment Research. Data as at 31 December 2021. Investors cannot invest directly in an index.

4 Chinese stocks don't move in lockstep with other equity markets

China's equity markets can be useful as a portfolio-diversification tool. A-shares have a correlation of 0.31 with global equities over the last 10 years, which means

they move in different directions almost 70% of the time. In comparison, US and global equities have a correlation of 0.97. Therefore, holding China A-shares in a global portfolio may help generate a better overall risk return profile.

Exhibit 4: historical correlation between major equity markets since 2012

	China A-shares	HK-listed China stocks	APxJ equities	GEM equities	Japan equities	US equities	European equities	World equities
China A-shares	1.00	0.59	0.46	0.44	0.25	0.29	0.27	0.31
HK-listed China stocks	0.59	1.00	0.85	0.84	0.50	0.48	0.54	0.56
APxJ equities	0.46	0.85	1.00	0.97	0.58	0.69	0.70	0.78
GEM equities	0.44	0.84	0.97	1.00	0.55	0.68	0.71	0.77
Japan equities	0.25	0.50	0.58	0.55	1.00	0.58	0.67	0.66
US equities	0.29	0.48	0.69	0.68	0.58	1.00	0.78	0.97
European equities	0.27	0.54	0.70	0.71	0.67	0.78	1.00	0.86
World equities	0.31	0.56	0.78	0.77	0.66	0.97	0.86	1.00

■ Low correlation ■ High correlation

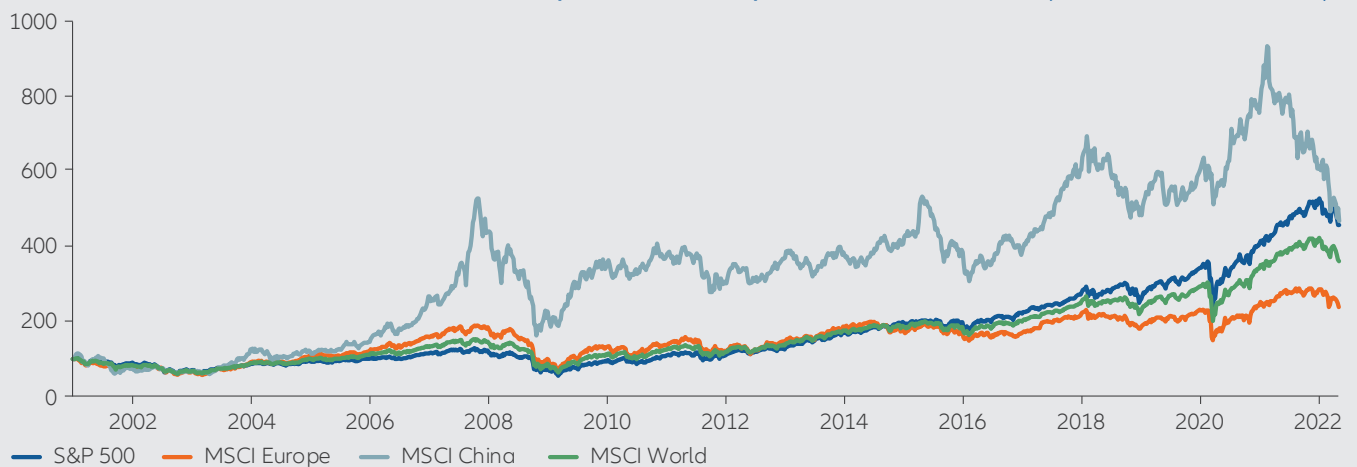
Source: Bloomberg, Allianz Global Investors. Data as at 30 April 2022. Correlation data is calculated based on historical return of respective MSCI indices for the past 10 years, using weekly USD return. China A-shares represented by MSCI China A Onshore Index; HK-listed China stocks by Hang Seng Chinese Enterprises Index; APxJ equities by MSCI AC Asia ex Japan Index; global emerging market equities by MSCI Emerging Markets Index; Japan equities by TOPIX Index; US equities by S&P 500 Index; European equities by MSCI Europe Index; world equities by MSCI World Index. Past performance is not indicative of future performance. Investors cannot invest directly in an index. Diversification does not guarantee a profit or protect against losses.

5 China equities exhibit higher volatility – and potentially higher returns over the longer-term

Investing in China brings different risks and greater unpredictability compared with Western markets. The Chinese government's clampdown on the internet platform and property sectors in 2021 – and the subsequent economic slowdown – illustrate this point. But investors have historically been rewarded with

long-term outperformance. Hypothetically, an investment in the MSCI China Index in the period from the end of 2000 to 30 April 2022 would have generated a 418% return in US dollar terms, more than double the return from European equities (MSCI Europe Index). In the past, moments of volatility like those seen recently have proved to be buying opportunities for many long-term investors.

Exhibit 5: MSCI China, MSCI ACWI, MSCI Europe and S&P 500 performance since 2001 (in USD, indexed to 100)



Source: Reuters Datastream, Allianz Global Investors. Data as at 30 April 2022. Based on total return performance in gross, in USD. Past performance is not indicative of future results. Investors cannot invest directly in an index.

6 Attractive valuations

Chinese equities, both onshore China A-shares and offshore stocks listed in Hong Kong, are trading at valuations below the historical average. That suggests

much of the negative news surrounding the economic slowdown is already priced in. Within the market, we see the pullback in recent months as a buying opportunity on a longer-term perspective for a growing number of high-quality stocks.

Exhibit 6: MSCI China A Onshore and MSCI China forward 12-month P/E

MSCI China A Onshore – forward 12 month P/E ratio



MSCI China – forward 12 month P/E ratio



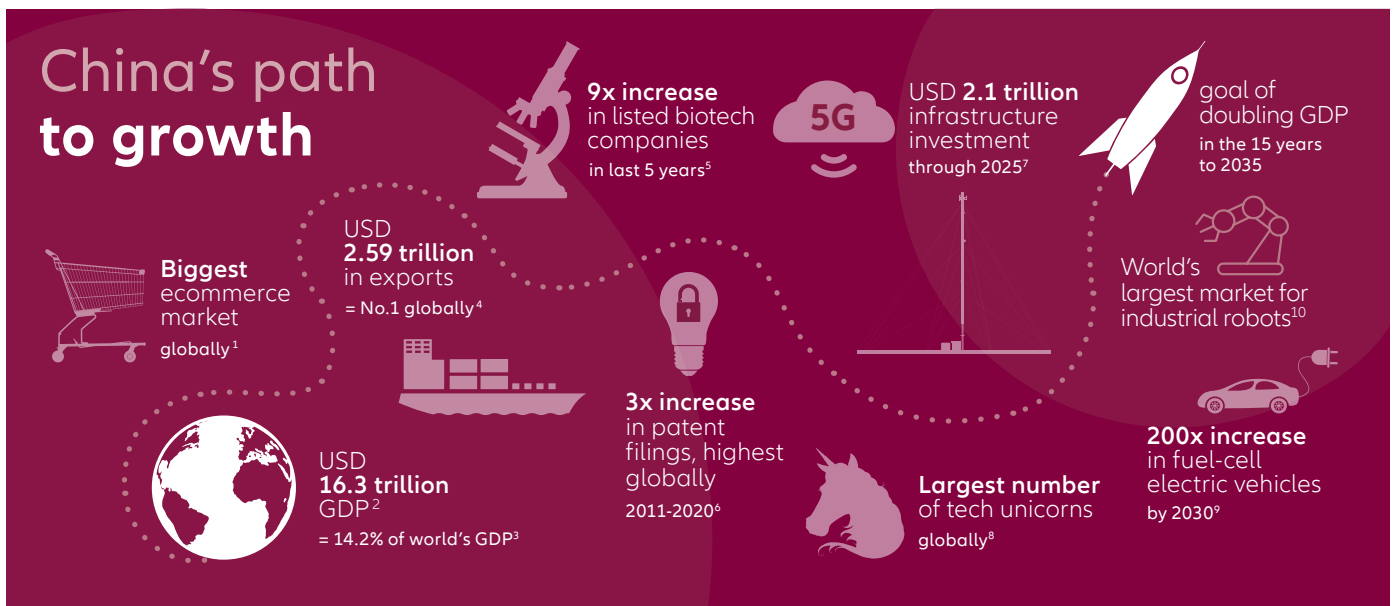
Source: Bloomberg, Allianz Global Investors, as of 30 April, 2022.

7 Innovation and transformation: key drivers of China's growth

China has come a long way in a short time. Once known as the “factory of the world”, it has shifted away from low-cost manufacturing towards the high-tech areas that are essential to its growth – and self-sufficiency. China is

seeking to increase its level of self-sufficiency in critical technologies of the future such as semiconductors and other strategically important areas like domestic energy supply. A rapidly expanding middle class, increasing domestic consumption and high-tech innovation are all key ingredients of the China growth story.

Exhibit 7: China's path to growth



1. Source: eMarketer. Data as at 2020.

2. Source: World Bank. Data as at 2019.

3. Source: World Bank. Data as at 2019.

4. Source: World's Top Exports. Data as at 2019.

5. Source: McKinsey, as at July 2021.

6. Source: WIPO, Allianz Global Investors, as at end 2020.

7. Source: Goldman Sachs. Data as at July 2020.

8. Source: Hurun Research Institute, Nikkei Asia review. Data as at 2019.

9. Source: Belfer Center for Science & International Affairs.

10. Source: International Federation of Robotics, as at January 2022.

8 China's equity market offers multiple options for investment

There are many ways for investors to buy shares of Chinese companies, with the capital markets much broader and deeper than many investors realise. This has become even more important during China's recent regulatory clampdown, which impacted some listings more than others – particularly US-listed American depositary receipts

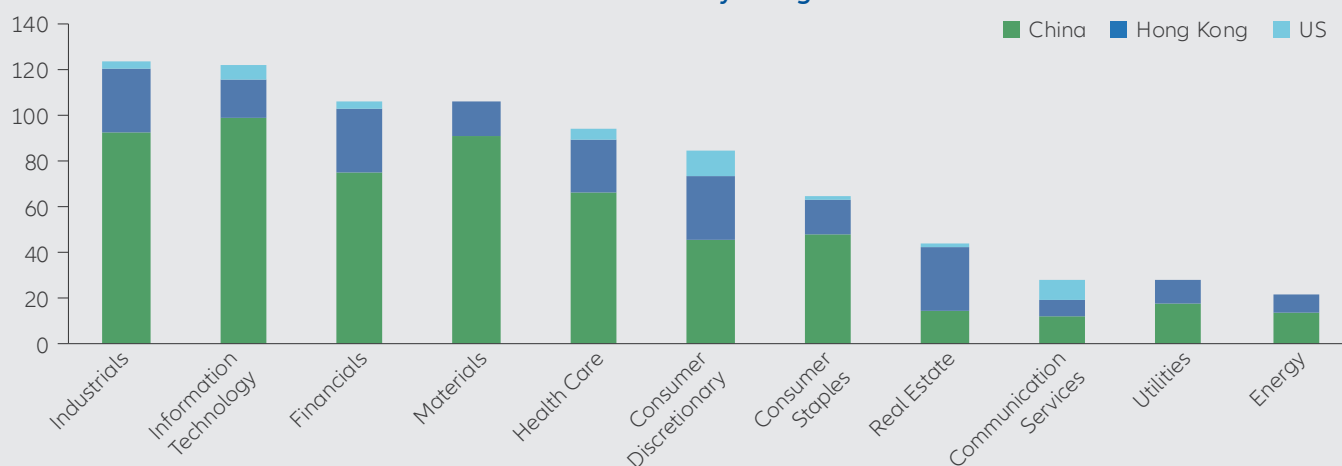
(ADRs) and select Hong Kong-listed companies. Investors also have access to a diversified range of sectors. Structural growth areas such as industrials, technology and materials are concentrated onshore, while internet and other traditional sectors such as real estate, utilities and energy are better represented in the offshore space. The multiple ways to invest and diversity in sectors are among the reasons why Chinese equities may provide an attractive investment option.

Exhibit 8: major stock exchanges for China equities vs euro area

	Shenzhen A-shares	Shanghai A-shares	China stocks listed in HK	US-listed ADRs	Total	Euro area
Market cap (USD tn)	5.2	7.2	3.9	0.9	17.2	9.7
Number of stocks	2,619	2,074	1,371	151	6,215	3,686

Source: Shenzhen Stock Exchange, Shanghai Stock Exchange, Hong Kong Stock Exchange, Bloomberg, Allianz Global Investors. Data as at 31 March 2022. The total figures are for comparison only. The stocks included may be listed in more than one exchange. Offshore China stocks are defined based on companies with ultimate parent domiciled in China. Suspended stocks, investment funds and unit trusts are excluded.

Exhibit 9: MSCI China All Shares Index – number of stocks by listing location



Source: Bloomberg, Allianz Global Investors. Data as at 30 April 2022. The total figures are for comparison only.

Allianz Global Investors is a leading active asset manager with over 700 investment professionals in 23 offices worldwide and managing EUR 673 billion in assets.

We invest for the long term and seek to generate value for clients every step of the way. We do this by being active – in how we partner with clients and anticipate their changing needs, and build solutions based on capabilities across public and private markets. Our focus on protecting and enhancing our clients' assets leads naturally to a commitment to sustainability to drive positive change. Our goal is to elevate the investment experience for clients, whatever their location or objectives.

Active is: Allianz Global Investors

Data as at 31 December 2021

MSCI AC Asia ex Japan Index is an unmanaged index that captures large- and mid-cap representation across two developed-market countries (excluding Japan) and nine emerging-market countries in Asia. MSCI All Country World Index (ACWI) is an unmanaged index designed to represent performance of large- and mid-cap stocks across 23 developed and 24 emerging markets. MSCI China A Onshore Index is an unmanaged index that captures large- and mid-cap representation across China securities listed on the Shanghai and Shenzhen exchanges. MSCI China Index is an unmanaged index that captures large- and mid-cap representation across approximately 85% of the China equity universe. MSCI Emerging Markets Index is an unmanaged index that captures large- and mid-cap representation across 27 emerging-market countries. MSCI Europe Index is an unmanaged index that represents the performance of large and mid-cap equities across 15 developed countries in Europe. MSCI World Index is an unmanaged index that captures large- and mid-cap representation across 23 developed-market countries. Hang Seng Chinese Enterprises Index is an unmanaged, market capitalisation-weighted index tracks the performance of major H-shares (stocks traded on the Hong Kong exchange). Standard & Poor's 500 Composite Index (S&P 500) is an unmanaged index that is generally representative of the US stock market. TOPIX Index is an unmanaged, market capitalization-weighted index of all companies listed on the First Section of the Tokyo Stock Exchange. Investors cannot invest directly in an index.

Investing involves risk. The value of an investment and the income from it will fluctuate and investors may not get back the principal invested. Emerging markets may be more volatile, less liquid, less transparent, and subject to less oversight, and values may fluctuate with currency exchange rates. Past performance is not indicative of future performance. This is a marketing communication. It is for informational purposes only. This document does not constitute investment advice or a recommendation to buy, sell or hold any security and shall not be deemed an offer to sell or a solicitation of an offer to buy any security.

The views and opinions expressed herein, which are subject to change without notice, are those of the issuer or its affiliated companies at the time of publication. Certain data used are derived from various sources believed to be reliable, but the accuracy or completeness of the data is not guaranteed and no liability is assumed for any direct or consequential losses arising from their use. The duplication, publication, extraction or transmission of the contents, irrespective of the form, is not permitted.

This material has not been reviewed by any regulatory authorities. In mainland China, it is for Qualified Domestic Institutional Investors scheme pursuant to applicable rules and regulations and is for information purpose only. This document does not constitute a public offer by virtue of Act Number 26.831 of the Argentine Republic and General Resolution No. 622/2013 of the NSC. This communication's sole purpose is to inform and does not under any circumstance constitute promotion or publicity of Allianz Global Investors products and/or services in Colombia or to Colombian residents pursuant to part 4 of Decree 2555 of 2010. This communication does not in any way aim to directly or indirectly initiate the purchase of a product or the provision of a service offered by Allianz Global Investors. Via reception of his document, each resident in Colombia acknowledges and accepts to have contacted Allianz Global Investors via their own initiative and that the communication under no circumstances does not arise from any promotional or marketing activities carried out by Allianz Global Investors. Colombian residents accept that accessing any type of social network page of Allianz Global Investors is done under their own responsibility and initiative and are aware that they may access specific information on the products and services of Allianz Global Investors. This communication is strictly private and confidential and may not be reproduced. This communication does not constitute a public offer of securities in Colombia pursuant to the public offer regulation set forth in Decree 2555 of 2010. This communication and the information provided herein should not be considered a solicitation or an offer by Allianz Global Investors or its affiliates to provide any financial products in Brazil, Panama, Peru, and Uruguay. In Australia, this material is presented by Allianz Global Investors Asia Pacific Limited ("AllianzGI AP") and is intended for the use of investment consultants and other institutional/professional investors only, and is not directed to the public or individual retail investors. AllianzGI AP is not licensed to provide financial services to retail clients in Australia. AllianzGI AP is exempt from the requirement to hold an Australian Foreign Financial Service License under the Corporations Act 2001 (Cth) pursuant to ASIC Class Order (CO 03/1103) with respect to the provision of financial services to wholesale clients only. AllianzGI AP is licensed and regulated by Hong Kong Securities and Futures Commission under Hong Kong laws, which differ from Australian laws.

This document is being distributed by the following Allianz Global Investors companies: Allianz Global Investors U.S. LLC, an investment adviser registered with the U.S. Securities and Exchange Commission; Allianz Global Investors Distributors LLC, distributor registered with FINRA, is affiliated with Allianz Global Investors U.S. LLC; Allianz Global Investors GmbH, an investment company in Germany, authorized by the German Bundesanstalt für Finanzdienstleistungsaufsicht (BaFin); Allianz Global Investors (Schweiz) AG; in HK, by Allianz Global Investors Asia Pacific Ltd., licensed by the Hong Kong Securities and Futures Commission; in Singapore, by Allianz Global Investors Singapore Ltd., regulated by the Monetary Authority of Singapore [Company Registration No. 199907169Z]; in Japan, by Allianz Global Investors Japan Co., Ltd., registered in Japan as a Financial Instruments Business Operator [Registered No. The Director of Kanto Local Finance Bureau (Financial Instruments Business Operator), No. 424], Member of Japan Investment Advisers Association, the Investment Trust Association, Japan and Type II Financial Instruments Firms Association; in Taiwan, by Allianz Global Investors Taiwan Ltd., licensed by Financial Supervisory Commission in Taiwan; and in Indonesia, by PT. Allianz Global Investors Asset Management Indonesia licensed by Indonesia Financial Services Authority (OJK).